

Resident benefits

- Access to high quality specialists using telehealth
- Reduces need for inconvenient travel
- Supports ongoing relationship with a geriatrician
- Customised care provided by a team of specialists, GP and RACF staff.



GP benefits

- Permits easy access to a geriatrician and future specialist panel
- Shares responsibility for resident care
- Simplifies program of geriatric care without negatively impacting on billing capacity
- Maintains clinical relationship with the patient
- Supports skill acquisition and specialisation in the geriatric field
- Reduces requirement for heavy visitation schedule.

Geriatrician benefits

- Remuneration at least equivalent to other practice environments
- Case load includes an average of one comprehensive assessment per week
- State-of-the-art virtual clinic with video conferencing solutions with a proven capacity to host clinical consultations
- Part of a research program improving aged care services.

RACF benefits

- Access to high quality specialists
- Comprehensive baseline health assessments on all new admissions
- Purpose built online clinical software and support tools
- Provision of clinical backup and support systems for referring practitioners
- Creation of a working relationship between the geriatrician and the RACF
- Development of the clinical skills of the RACF nursing staff
- Stronger associations with referring practitioners
- Improved accreditation ratings and ACFI processes
- Reduced transportation and supervisory costs associated with off-site consultations
- Ability to provide more appropriate care for the residents
- Market advantage, offering clients convenient access to specialist telehealth services.

Contact Us

RES-e-CARE

Phone: +61 7 31765530

Email: enquiries@resecare.com.au

Web: www.resecare.com.au



Bringing Telehealth to Residential Aged Care Facilities



Centre for Research in Geriatric Medicine

The Centre for Research in Geriatric Medicine (CRGM) is among the most successful geriatric medicine research organisations in Australia. Established in 2002, it has developed a reputation for innovative systems of care, information technology and telemedicine to advance access to, and quality of specialist aged care services. It is home to the Australian interRAI Coordinating Centre.

Centre for Online Health

The Centre for Online Health (COH) is recognised internationally for its role in research, service delivery and education and training in the fields of telemedicine, telehealth and e-Healthcare. Established in 1999, COH's primary research examines the feasibility, efficacy, clinical effectiveness and economics of telehealth and telemedicine in a variety of settings. It also acts as a clinical coordinator of paediatric telemedicine services.

Service

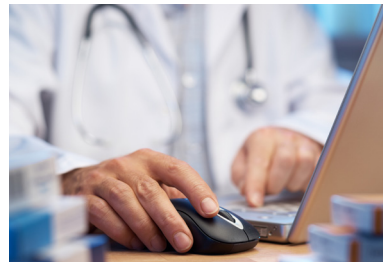
The COH offers a fully inclusive service, featuring customised telehealth equipment, remote technical management including software systems. It also provides the clinical coordination of geriatricians and other clinicians for delivering telehealth (video) consultations to RACFs.

Innovations in Geriatric Clinical Care

Residents in aged care facilities will soon benefit from specialist geriatric telehealth services. The federal government supports initiatives that provide key clinical services using telehealth. The University of Queensland is coordinating a service model that supports comprehensive geriatric telehealth assessments using video conferencing.

The Centre for Online Health (COH) and the Centre for Research in Geriatric Medicine (CRGM) have tested the use of high definition mobile wireless video consultations between specialists and Residential Aged Care Facilities (RACFs), and have developed protocols to support geriatric care using telehealth.

RES-e-CARE will provide regular geriatric consultations with participating RACFs, which will be fully supported by purpose built video conferencing studios, high-quality electronic data systems and clinical support staff trained in telehealth. RES-e-CARE addresses the needs of geriatricians, general practitioners and RACF staff.



Service Development

Future service enhancements include the creation of a telehealth specialist panel introducing medical specialists like psychiatrists, dermatologists, cardiologists and endocrinologists into residential aged care facilities. Allied health professionals such as speech pathologists, occupational therapists and physiotherapists will also offer services in RES-e-CARE.

Clinical Arrangements

- RES-e-CARE is designed to enhance, support and simplify clinical care of residents in RACFs.
- RES-e-CARE offers:
 - comprehensive geriatric assessment of all new admissions
 - geriatric review
 - case conferencing
 - health and care planning
 - annual review
 - weekly or fortnightly consultation sessions
 - regular on-site consultations.
- Clinical scheduling, case preparation and reporting processes are coordinated.
- Close working relationships between geriatricians, GPs and RACF staff are established, while supporting skills transfer.
- RES-e-CARE provides web-based access to specialised clinical decision support software.

